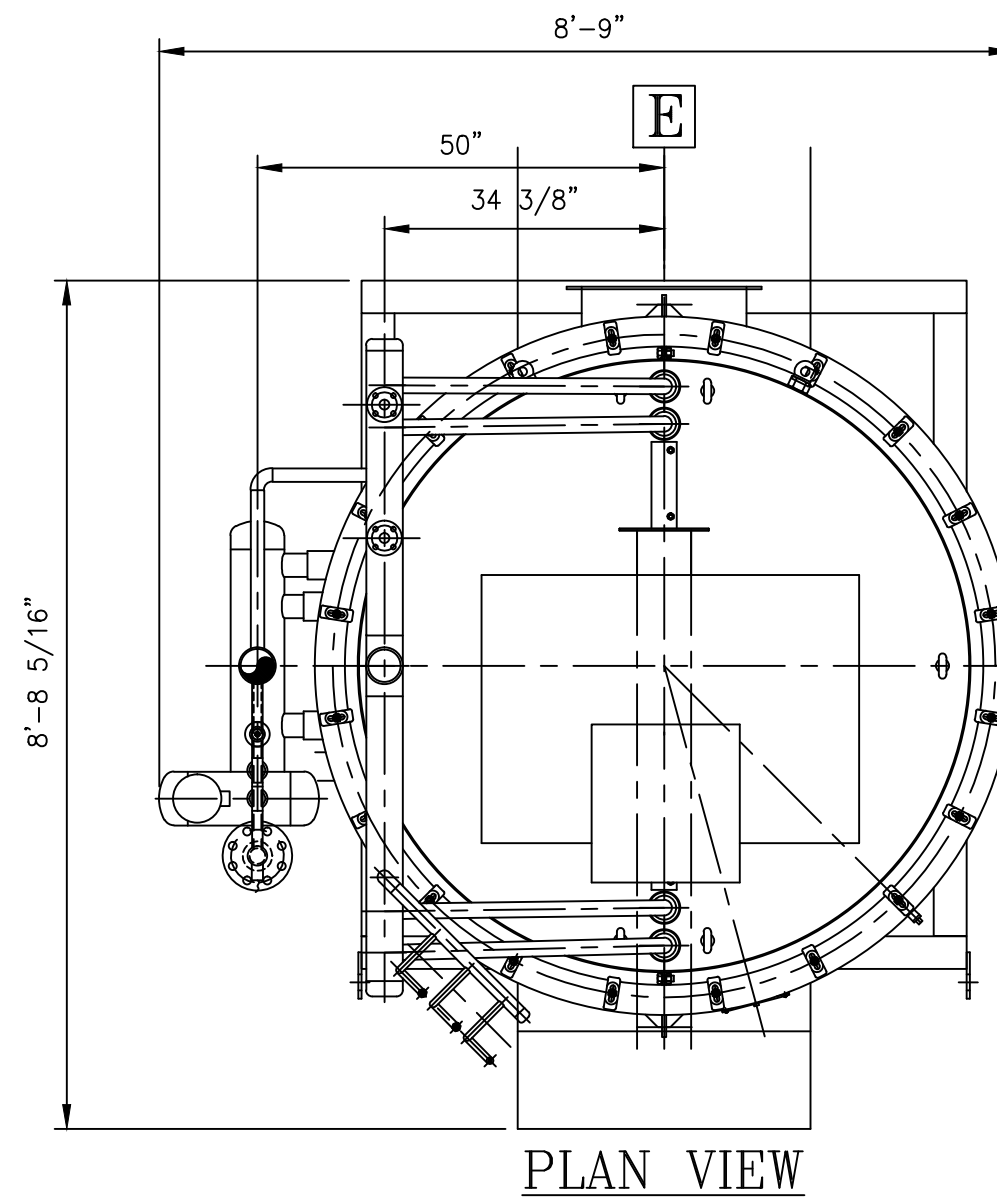
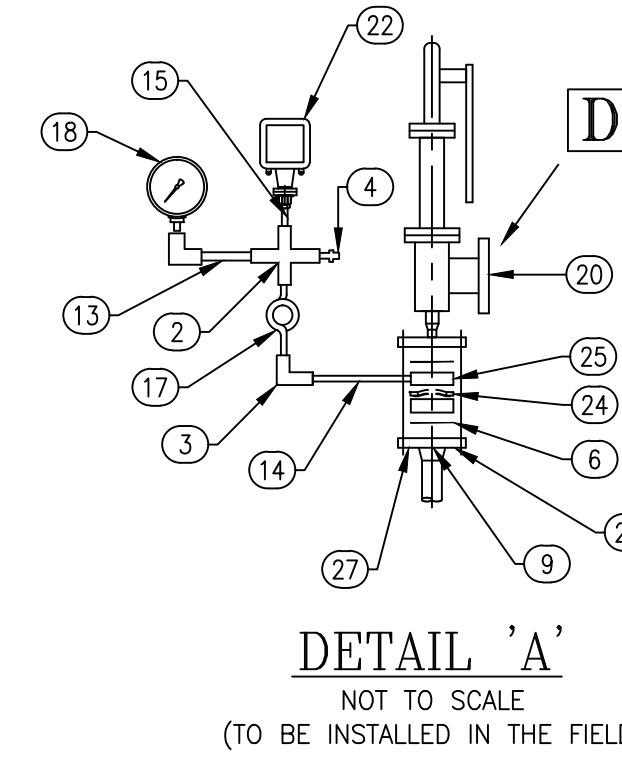


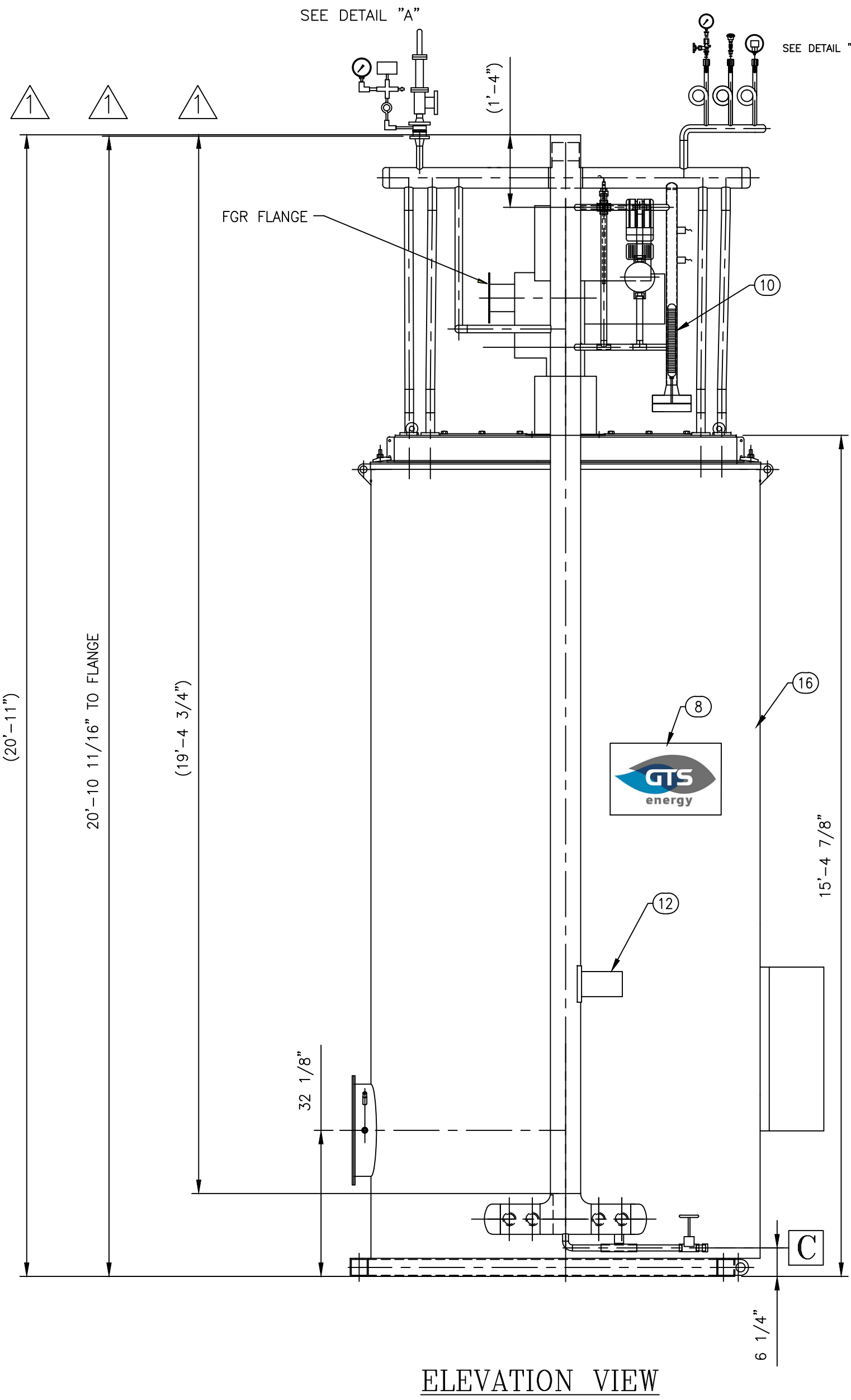
BASE FRAME/FOUNDATION MOUNTING DETAILS



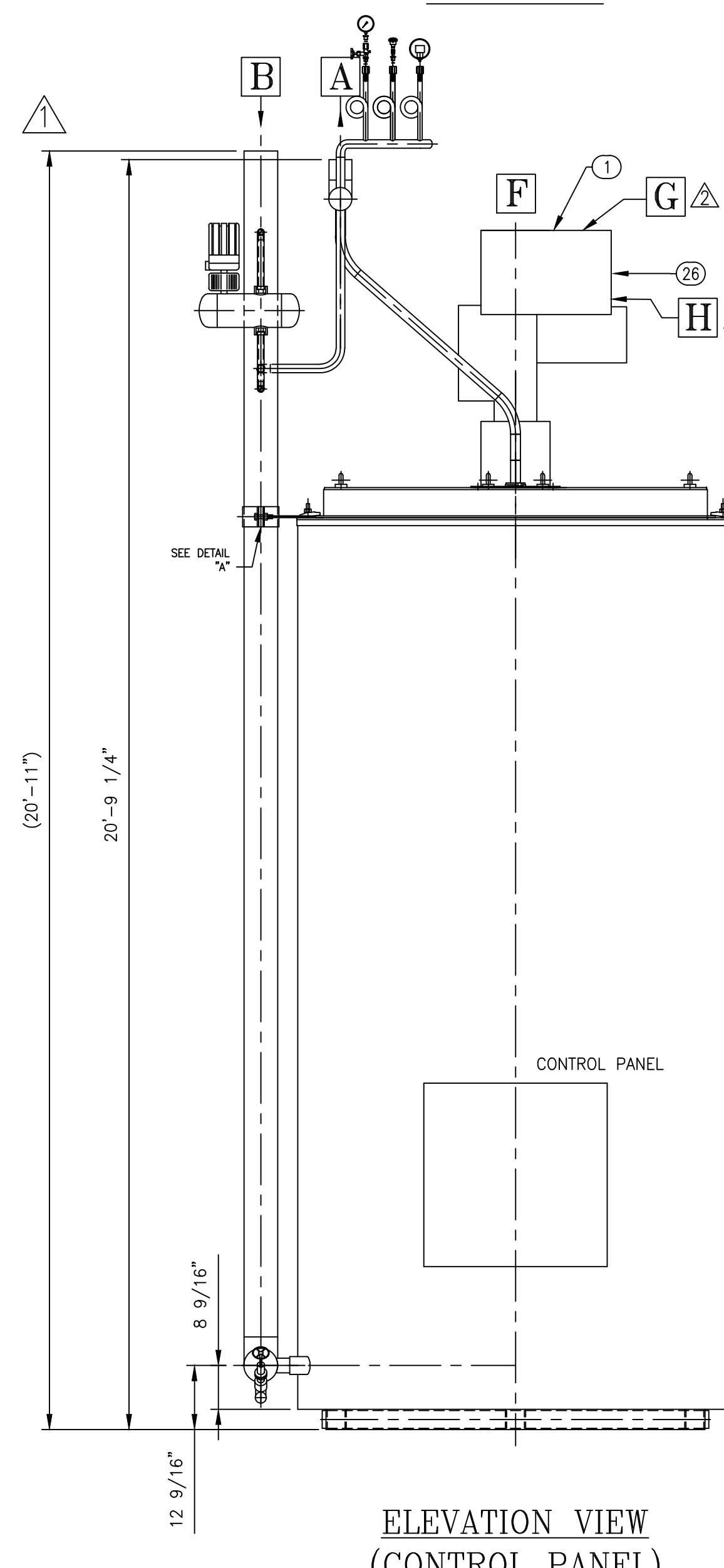
PLAN VIEW



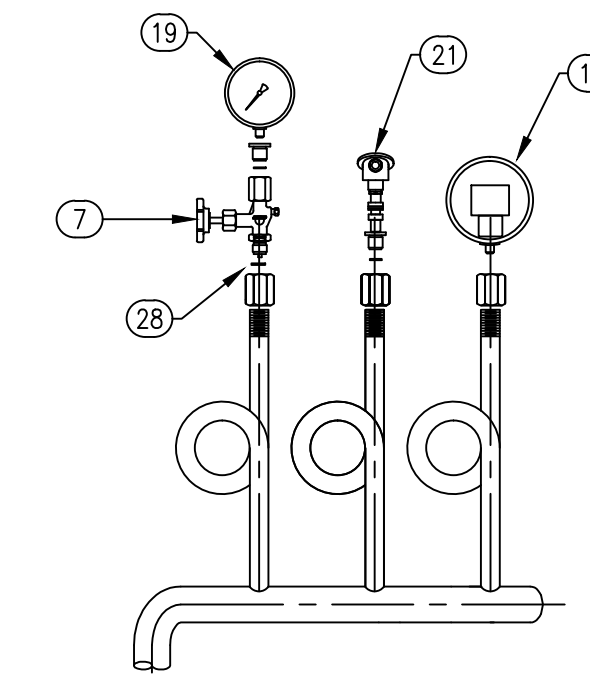
DETAIL 'A'
NOT TO SCALE
(TO BE INSTALLED IN THE FIELD)



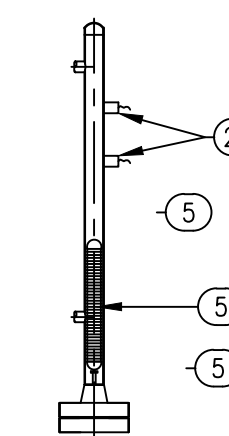
ELEVATION VIEW



ELEVATION VIEW
(CONTROL PANEL)

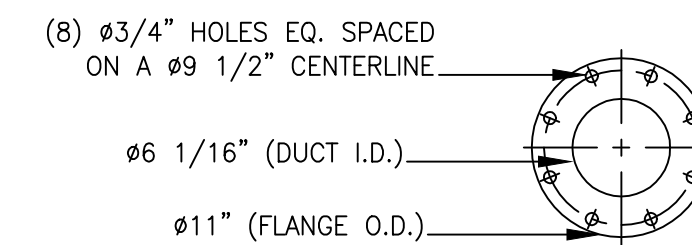


DETAIL 'B'
NOT TO SCALE
(TO BE INSTALLED IN THE FIELD)



MAGNETIC LEVEL CONTROL
INDICATOR ASSEMBLY
NOT TO SCALE

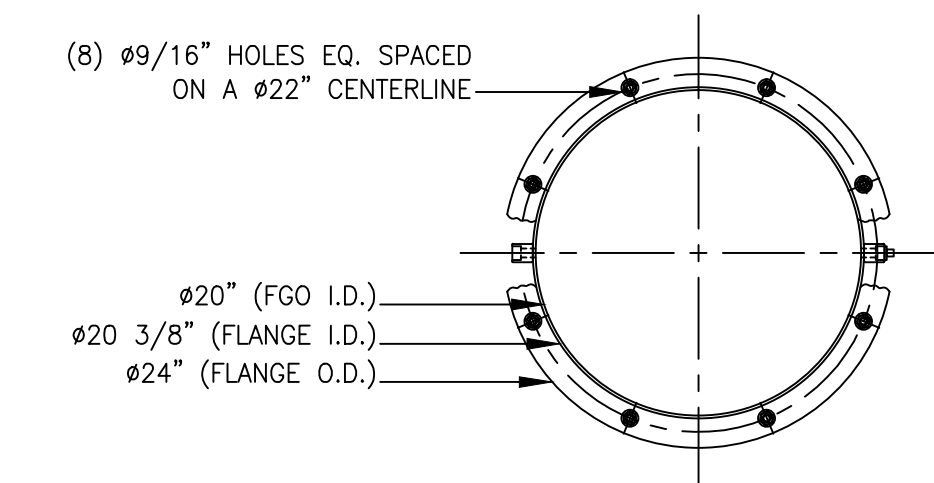
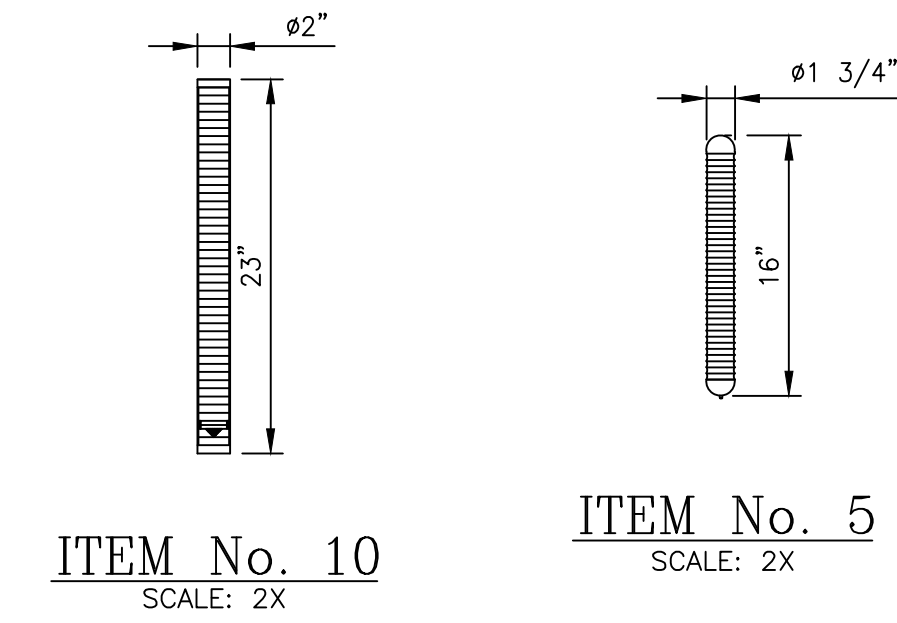
NOTE:
DO NOT INSTALL LEVEL INDICATOR FLOAT UNTIL THE
ASSEMBLY IS HYDRO TESTED. SHIP FLOAT LOOSE AND
INSTALL AFTER HYDRO TEST.



FLUE GAS RECIRCULATION DETAIL
SCALE: 2X

BILL of MATERIALS						
ITEM	QTY	DESCRIPTION	SIZE-DIMENSION-REFERENCE	MATERIAL	WEIGHT	TAGS
1	1	BURNER	Industrial Combustion LMLG-100	GTS	310.00	
2	2	CROSS	1/4", 4-FX-SS, CROSS COMPANY	316SS	1.50	
3	4	ELBOW	1/4" NPT, 90°	316SS	8.00	
4	2	EXCESS FLOW VALVE	1/4", OSECO, X-99-00000-004, FREEMAN	316SS	1.00	
5	1	FLOAT	FOR MAGNETIC LEVEL INDICATOR ASSEMBLY, NUK 46 x 400mm, IGEMA	TITANIUM	5.00	LI414
6	4	GASKET	1 1/2" - 900#, SPIRAL WOUND, FLEXI-GAS-1	FLEXITALLIC	4.00	
7	1	GAUGE VALVE	G 1/2" PN 400	GTS	2.00	
8	1	GTS LOGO	8" x 13"	GTS	0.50	
9	16	HEX NUT	M24	GTS	4.00	
10	1	MAGNETIC FLAG ASSEMBLY	NUK L-500mm, IGEMA	GTS	15.00	LSL413
11	1	MAIN SUPPLY PRESSURE SWITCH	1/4" MNPT 200-2500 PSI, DWYER DAW-7043-153-13E	316SS	3.00	PSH402
12	1	NAME PLATE		GTS	0.50	
13	2	NIPPLE	1/4" NPT x 2" LG, TBE, 4-4-MHLN-2-SS, CROSS CO.	316SS	0.50	
14	2	NIPPLE	1/4" NPT x 4" LG, TBE, 4-4-FE-SS, CROSS COMPANY	316SS	0.50	
15	2	NIPPLE	1/4" x CLOSE, TBE, 4-4-MHLN-SS, TBE	316SS	0.50	
16	1	NUK-1500	SEE DWG: 2001-21-001-NUK-1500	GTS	17109.90	
17	2	PIGTAIL	1/4" - S4726	316SS	2.00	
18	1	PRESSURE GAUGE	4 1/2" - 1/4" - 0/3000#, ASHCROFT	GTS	2.00	PI411
19	1	PRESSURE GAUGE	4 1/2" - 1/2" - 0/1500#, ASHCROFT	GTS	1.00	PI401
20	1	PRESSURE RELIEF VALVE	1 1/2" - 900# RF INLET x 2.5" - 300# RF OUTLET, 7560 LB/HR RELIEF @ 1350 PSI SET PRESS., CONSOLIDATED	GTS	24.00	PSV410
21	1	PRESSURE TRANSMITTER	2 WIRE, FISCHER, ME61-12-087-BH9	GTS	1.00	PT400
22	2	R DISK BURST PRESSURE SWITCH	250-3500 PSI, H100-489, SET TO 300 PSI	GTS	2.00	PSHH411
23	2	REED TYPE LEVEL SWITCH	NUK M510-60-IP6, IGEMA	GTS	2.00	LI414
24	2	RUPTURE DISK	TYPE FAS, 1350 PSI @ 650°F	316SS	2.00	PSE409
25	2	RUPTURE DISK	1 1/2" - ROUND HOLDER ASSEMBLY	316SS	4.00	PSE409
26	1	BLOWER	COMBUSTION BLOWER			
27	1	STUD	M24 x 190, DUCTILE FLABO	976GRB7	0.80	
28	5	WASHER	G 1/2", SCHNIDER	SS	0.50	
29	16	WASHER	M24	GTS	1.60	
APPROXIMATE TOTAL WEIGHT =					17509	LBS.

NOZZLE DESIGNATION			
NOZZLE	SIZE	TYPE	DESCRIPTION
A	6"	SCH 120, BW	STEAM OUTLET
B	6"	SCH 120, BW	CONDENSATE RETURN
C	1"	SCH 80, TOE	DRAIN
E	20" I.D.	FLANGE	FLUE GAS OUTLET
D	2"	300# FLANGE	PRV OUTLET
F	2"	NPT	NATURAL GAS INLET
G	3/8"	NPT	OIL INLET
H	3/8"	NPT	OIL RETURN



FLUE GAS OUTLET DETAIL
SCALE: 2X

GTS energy
2232 Tecumseh Dr.
Norman, OK 73069
Ph. 405-321-9800
Fax 405-321-9801
www.gtsenergy.com
info@gtsenergy.com

PROCESS HEATING SOLUTIONS

.00 DECIMAL DIMENSIONS = 0.06"
.000 DECIMAL DIMENSIONS = 0.010"
FRACTIONAL DIMENSIONS = 1/16"
STRUCTURAL DIMENSIONS = 1/32"
ANGULAR DIMENSIONS = 0-30°

THIS DOCUMENT IN DESIGN AND DETAIL IS THE PROPERTY OF GTS ENERGY, INC. IT IS LOANED TO THE RECIPIENT AND SUBJECT TO RETURN UPON REQUEST. THE INFORMATION CONTAINED IS CONFIDENTIAL AND SHALL NOT BE COPIED, DISCLOSED OR SUBMITTED TO FOREIGN PARTIES FOR USE OR EXAMINATION WITHOUT SPECIFIC WRITTEN PERMISSION FROM GTS ENERGY, INC.

REFERENCE DOCUMENTS	REV	DESCRIPTION	DRWN	CHKD	APPR	DATE	REV	DESCRIPTION	DRWN	CHKD	APPR	DATE
	2	ADD G & H NOZZLE LABELS; CHG NOZZLE A TO 6"	KTS	NDII	QZR	11/26/2013						
	1	ADDED DIMENSIONS	GLB	KTS	QZR	11/19/2013						
	0	ISSUED FOR FABRICATION	NDII	QZR	QZR	10/2/2013						

STANDARD
NUK-1500
GENERAL ARRANGEMENT

GTS NUMBER: 7191-21-001
JOB NUMBER: NUK-1500
SCALE: 1/2"=1'-0"

SHEET: 1
TOTAL: 1
REV: 2
DATE: 10/2/2013
DSIZE